

Kaltech

Yuragi Junsui Premiere

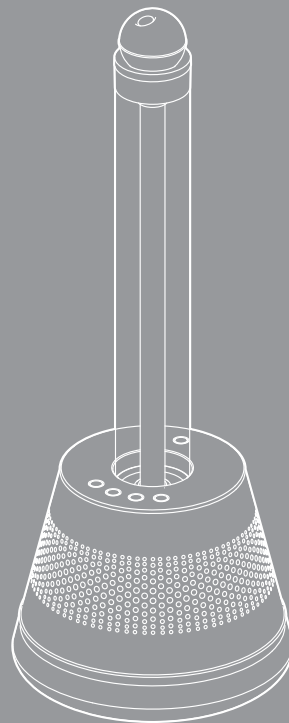
User's manual KL-H01

BEAUTY HUMIDIFIER PREMIERE

READ and SAVE THESE INSTRUCTIONS



You can find the latest version of this manual on the Kaltech website. Scan the QR Code on the left to view the KL-H01 product page.



Contents

Introduction	2	Beauty mode	17
Name of each Parts	5	Cleaning the product	20
Assembling the main unit	7	Error	26
Positioning the product	10	Safety functions	26
How to Use	11	Troubleshooting	27
Adding water to the smart bar	15	IMPORTANT SAFETY INSTRUCTIONS	29
Smart heads	16	Specifications	35

Thank you for purchasing a Kaltech product. Please read this user manual before using the product to ensure safety, and keep it handy for future reference.

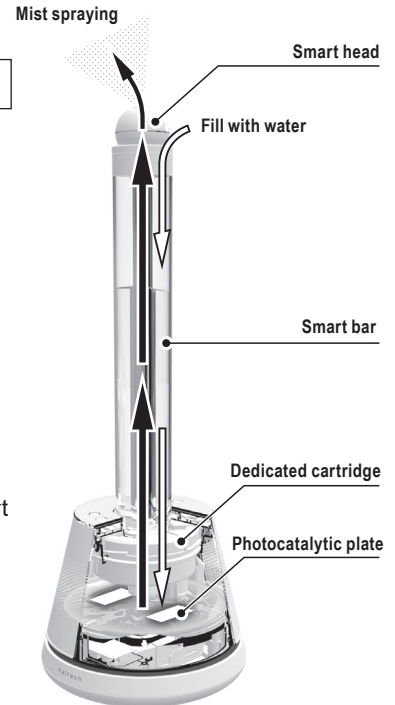


Introduction

Yuragi Junsui Premiere, a revolutionary beauty humidifier that uses photocatalytic technology, combines unique functionality with a refined design that will beautify your living space. The product is packed with innovations made possible by a thorough attention to detail whose cumulative effect is to redefine the conventional concept of a humidifier.

Three innovative technologies

- 1 The dedicated cartridge is specially designed to remove residual chlorine and other substances found in water, making it less likely that white crystals will adhere to the tray or humidification filter and simplifying cleaning. The cartridge also helps maintain a mild level of acidity, which is known to be gentle on the skin.
- 2 Water passing through the cartridge is purified by the humidifier's photocatalytic plate.
- 3 Once it has been purified by the photocatalyst, water is turned into a fine mist by the smart head at the top of the humidifier and sprayed into the air. You can convert the product into a beauty humidifier by removing the smart bar and attaching the included beauty attachment. The beauty attachment is uniquely designed to provide a refreshing and moisturizing sensation directly to the skin. It has a different internal design and mist adjustment function than the smart head.



The product can be used in two configurations: humidification mode, which humidifies the interior space, and beauty mode, which sprays mist onto the skin. Mildly acidic soft water that has been purified by a photocatalyst is sprayed onto the skin to naturally moisturize it. The photocatalyst's visible light source, which is needed to purify the water, gently illuminates the area around the product, creating a relaxing ambience in the surrounding space.



Humidification mode

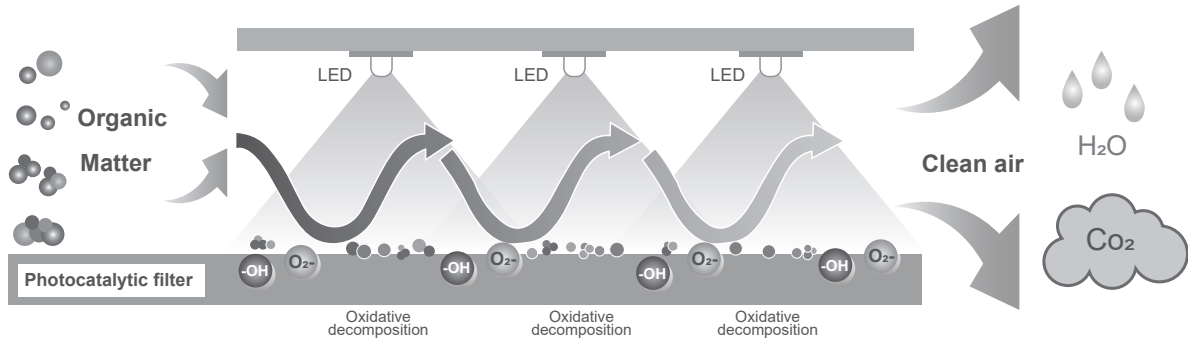


Beauty mode



Leave the product on during the season of use unless you need to clean it or intend to not use it for an extended period of time. The photocatalyst function stops working when the product is turned off, preventing it from eliminating bacteria and viruses. After 10 days without operating the product, it will be automatically turned off.

What is a photocatalyst?



The above figure illustrates the mechanism by which a photocatalyst purify air. When the titanium oxide-coated photocatalytic filter is illuminated by the visible-light LED, it causes a chemical reaction that decomposes viruses, bacteria, and odors caught in the filter*. In this way, air is cleaned before leaving the filter. Kaltech has applied the same principle and demonstrated that it can be used to decomposes viruses and bacteria contained in water, allowing a photocatalyst to be used to purify water.

**This process does not break down all viruses, bacteria, or odors.*

Name of each Parts

Package contents

Premium touch cover
× 1



Operating panel × 1



Note: The above two parts
are installed in the main unit
prior to shipment.

Main unit × 1



Upward-facing
smart head × 1



Smart bar × 1



Dedicated Stand × 1



Beauty attachment
× 1



Angled smart head
× 1



Bidirectional
smart head
× 1



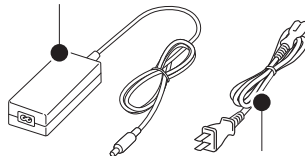
Note: The beauty attachment and smart heads are
packaged in dedicated pouches.

Dedicated pouch × 4



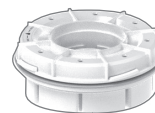
Please use the pouch with the
rounded bottom to store the
attachment and two heads.

Dedicated AC adapter × 1



Dedicated power cord × 1

Dedicated
cartridge × 1



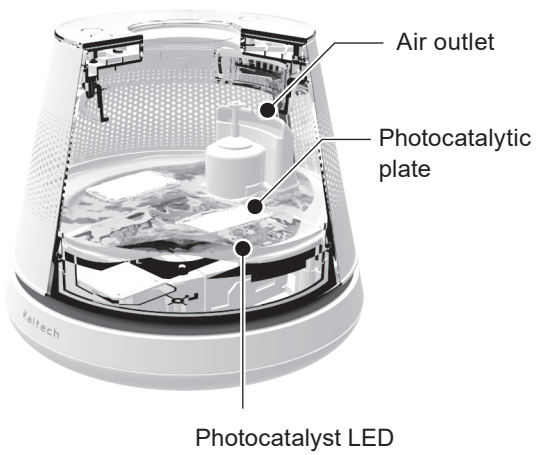
User manual
(this manual) × 1



Outside of the main unit



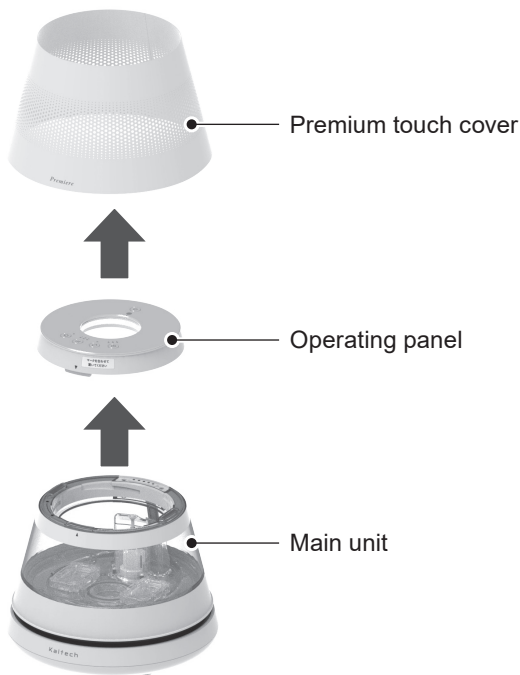
Inside of the main unit



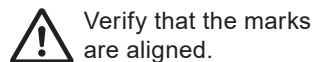
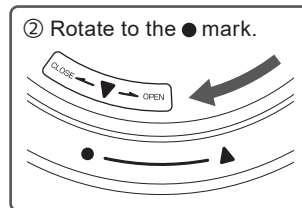
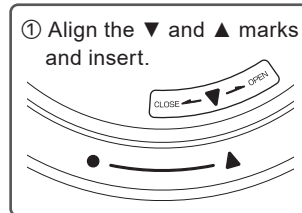
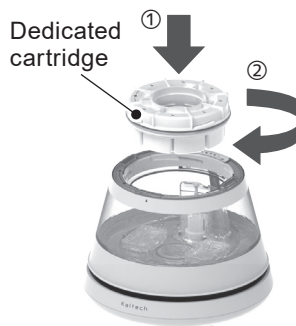
Assembling the main unit

Installing the dedicated cartridge

1. Remove the premium touch cover and operating panel from the main unit.

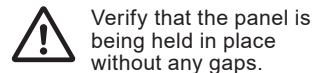
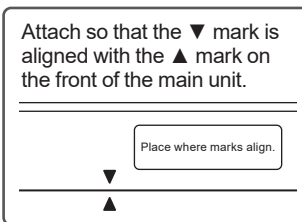


2. Remove the dedicated cartridge from its pouch and install it in the main unit.



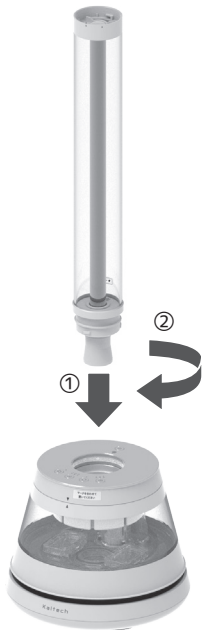
3. Attach the operating panel.

The panel is held in place by magnets.

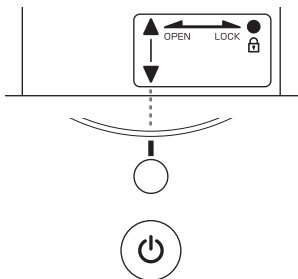


Put water

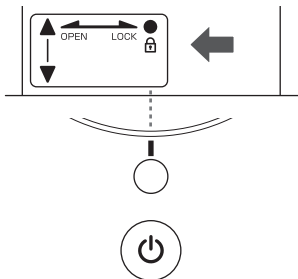
4. Insert the smart bar into the main unit.



① Align the ▼ mark on the bottom of the smart bar with the | mark above the power button on the operating panel and insert the bar.



② Rotate the smart bar firmly until the | mark on the operating panel aligns with the ● mark on the bar to lock it in place.

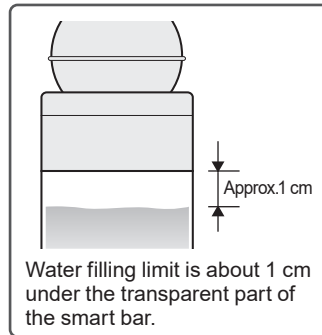
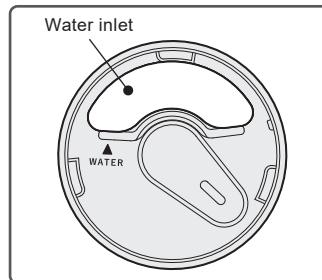


5. Add water to the smart bar.

Exercise care not to spill any water.



- Do not add water anywhere other than the water inlet.
- This product is equipped with a dedicated cartridge that converts hard water into soft water, but depending on the hardness of the water in your area, the life of the dedicated cartridge may be significantly shorter. The lifespan of the dedicated cartridge is based on use in areas with soft to medium-hard water, so if you live in an area with high water hardness, we recommend that you fill the unit with soft water that has been passed through a household water softener. In addition, water heated to 40°C or higher may not be efficient enough.

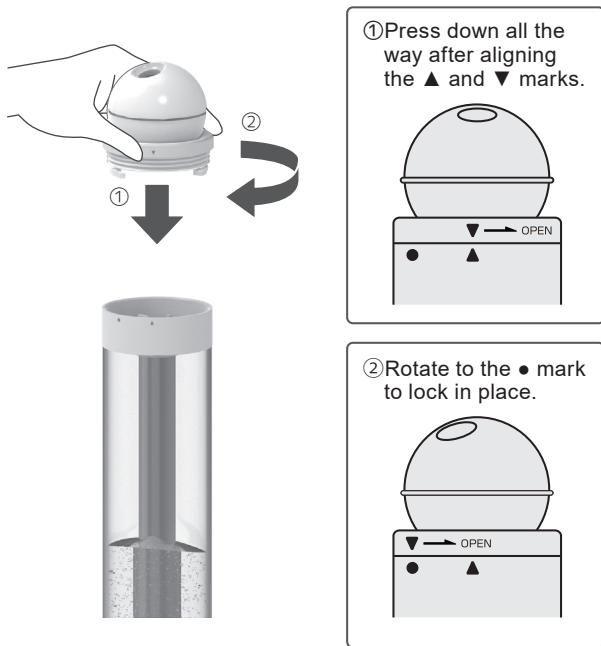


Water filling limit is about 1 cm under the transparent part of the smart bar.

Assembling the product

6. Attach a smart head.

You can attach any of the three smart heads.
For more information about the heads,
see “Smart heads” on page 16.



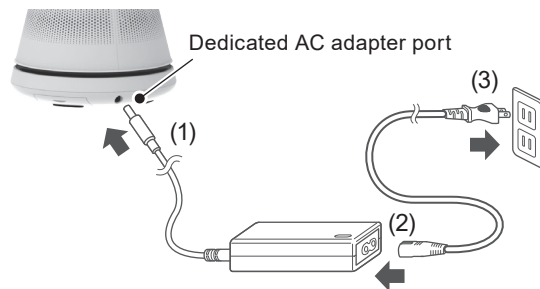
7. Attach the premium touch cover.

Slide the premium touch cover down over the operating panel so that the “Première” logo on the cover appears above the “Kaltech” logo on the main unit.

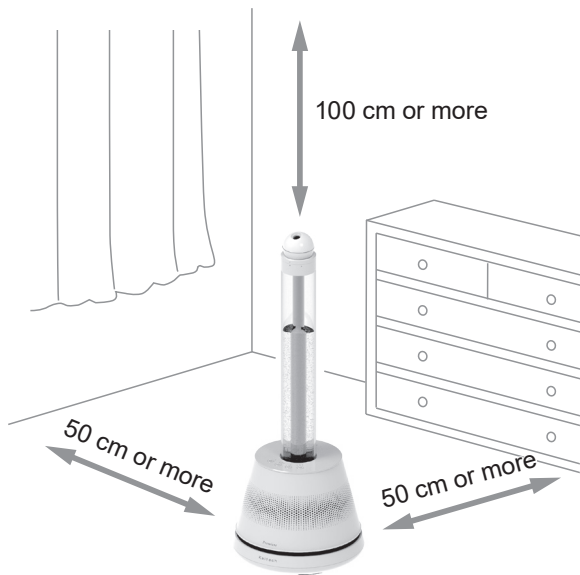


8. Connect the dedicated power cord to the dedicated AC adapter.

- (1) Connect the dedicated AC adapter to the main unit.
- (2) Connect the dedicated power cord to the dedicated AC adapter.
- (3) Plug the dedicated power cord into a power outlet.



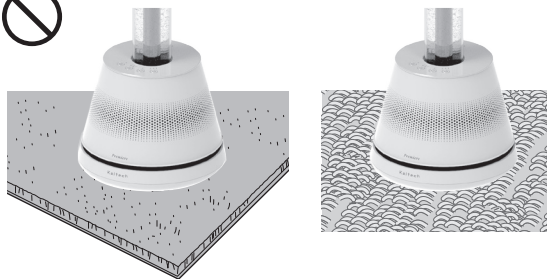
Positioning the product



When using the product in humidification mode, position it as shown in the figure, taking care to leave a sufficient amount of space between it and walls, furniture, and other objects. In addition, ensure that there is at least 100 cm of open space above the outlet. Failure to do so may cause the product to fail to perform as designed and lead to mold or dirt due to condensation and other issues.

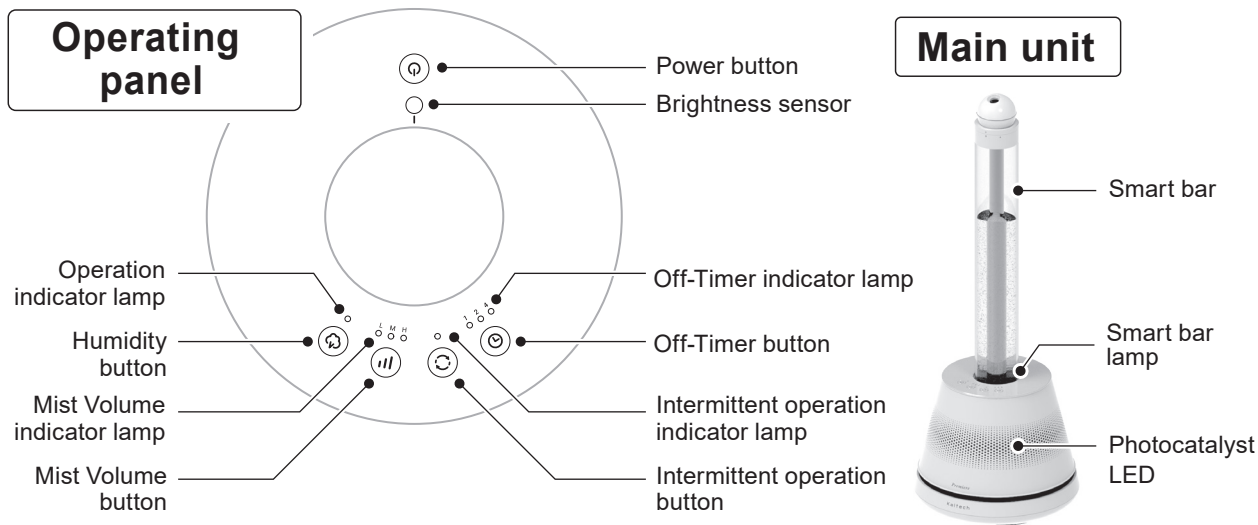


Do not place the product on an angled or uneven surface. Placing the product on an angled surface may cause the product to fail to perform as designed or fall over. For other locations in which the product should not be used, please see “Cautions” on page 31.



Do not place the product on a deep-pile carpet or blanket, on a shaky stand, or in other unstable locations. Failure to place the product in a stable, level location could cause it to fall over.

How to Use



Turning on the product



Press the power button after verifying that there is enough water in the smart bar. The photocatalyst LED will turn blue, and the product will turn on.

The power indicator lamp will flash orange, and the product will prepare to generate mist for approx. 2 minutes. Once preparations are complete, the operation indicator lamp will turn off.

Note: The smart bar lamp will also flash orange when using the product for the first time and when using it for the first time after an extended period of non-use.



Leave the product on during the season of use unless you need to clean it or intend to not use it for an extended period of time. The photocatalyst function stops working when the product is turned off, preventing it from eliminating bacteria and viruses.

Turning off the product

Press and hold the power button while the product is on to turn it off.



- After 10 days without operating the product, it will be automatically turned off.
- After 5 days without supplying water from the indication for “Out of water” (Operation lamp flashes orange), product will be automatically turned off.
- When using the product after the automatic power-off, make sure to clean the product before use.

Starting humidification operation

Press the Humidity button to start the humidification operation.



- The Operation indicator lamp will turn blue. See “Indicator lamps” on page 14.
- If you press the humidification button during the humidification operation, the humidification operation will stop.

Adjusting the mist volume

Press the mist volume button to adjust the amount of mist.



- You can choose from three settings: low, medium, and high.
- The mist volume indicator lamp will change each time you press the mist volume button.
- The mist volume cannot be adjusted when using the product in beauty mode.

Mist volume
indicator lamp

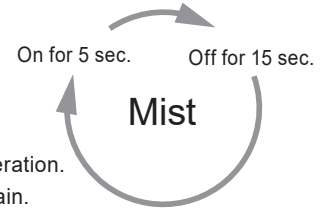


Intermittent operation



Press the intermittent operation button to activate mist generation for 5 seconds and then disable it for 15 seconds during the humidification operation.

- This function prevents excessive humidification and maintains a comfortable level of humidity.
- Use when enabling the humidification operation for an extended period of time, for example when sleeping.
- The intermittent operation indicator lamp will turn on during the intermittent operation.
- To cancel the intermittent operation, press the intermittent operation button again.
- Intermittent operation is not available when using the product in beauty mode.



Setting the Off-timer

1 2 4
○ ○ ○



Press the Off-Timer button to set how long to wait before the humidification operation turns off (timer setting).

- You can choose from three settings: 1 hour, 2 hours, and 4 hours.
- Use when enabling the humidification operation before going to sleep.
- Operation may stop before the set amount of time has elapsed if the water level is low.
- Operation will stop if the product runs out of water before the set amount of time has elapsed.
- The timer is not available when using the product in beauty mode.

Off-Timer indicator lamp

Once the timer has been set, the indicator lamp will change as time passes. It also changes each time the timer button is pressed.



Indicator lamps

The main unit's smart bar lamp and operation indicator lamp turn on and flash as follows:

Product behavior	Operation indicator lamp	Smart bar lamp	Photocatalyst LED
Power off	○ Off	○ Off	Off
Power on (no mist)	○ Off	○ Off	On (blue)
Power on (mist)	● On (blue)	● On (blue)	On (blue)
Out of water*1	☀ Flashing slowly (orange)	☀ Flashing slowly (orange)	On (blue)
Standby start*2	☀ Flashing (blue)	☀ Flashing (blue)	On (blue)
Cartridge replacement warning*3	☀ Flashing (white)	☀ Flashing (white)	On (blue)
Error	● On (red)	☀ Flashing slowly (red)	Off

*1 The smart bar lamp will also flash orange when using the product for the first time and when using it for the first time after an extended period of non-use.

*2 Pressing the Humidity button when the product is out of water (when the indicator lamp is slowly flashing orange) will activate the standby operation, causing mist generation to start automatically once water purification is complete.

*3 Press and hold the Humidity button to reset the cartridge replacement warning. (See "Replacing the dedicated cartridge" on page 23.)

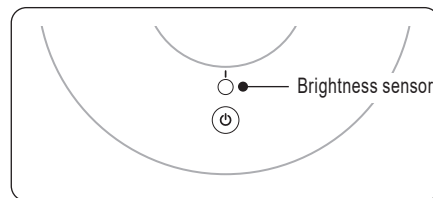
Brightness sensor

The brightness sensor dims the smart bar's lamp when the surrounding area is dark.

Turning off the smart bar lamp

Press and hold the off-timer button to turn off the smart bar lamp.

Press and hold the button again to turn the lamp back on.



Adding water

- Add a sufficient amount of water before starting the humidification operation for an extended period of time, for example when sleeping, or when using the off-timer.
- If the main unit runs out of water during humidification operation, the operation indicator lamp and the smart bar lamp will flash orange to alert you. For more information about how to add water, see "Adding water to the smart bar" on page 15.

Adding water to the smart bar

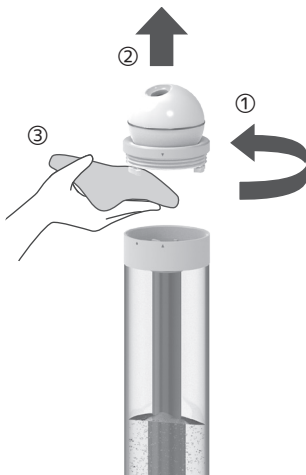


The product's dedicated cartridge removes residual chlorine and other impurities from water.

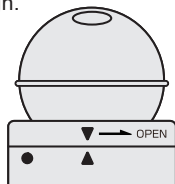
This product is equipped with a dedicated cartridge that converts hard water into soft water, but depending on the hardness of the water in your area, the life of the dedicated cartridge may be significantly shorter. The lifespan of the dedicated cartridge is based on use in areas with soft to medium-hard water, so if you live in an area with high water hardness, we recommend that you fill the unit with soft water that has been passed through a household water softener. In addition, water heated to 40°C or higher may not be efficient enough.

1. Remove the smart head.

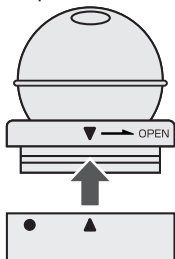
Water may collect inside the smart head. Have a towel or cloth handy.



① Rotate the smart head until the ▲ and ▼ marks align.



② Lift up to remove.



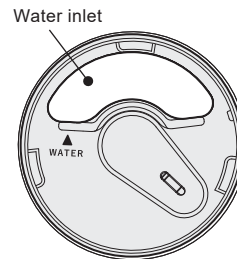
③ Wipe away any moisture with a towel or cloth.

2. Add water to the smart bar.

Be careful not to spill any water.



Pour water into the water inlet.



For more information about how much water to add, see "5. Add water to the smart bar" on page 8.



- Never add water anywhere other than the water inlet.
- Do not add water during the humidification operation.

3. Attach a smart head.

See "6. Attach a smart head" on page 9.

4. Turn on the product and press the humidification button to start generating mist.

The main unit will draw water from the smart bar.

Smart heads

During the humidification operation, mist is sprayed from the smart head. You can adjust the direction in which the mist is sprayed by rotating the smart head horizontally. The product includes three smart heads. Choose the head that is best based on your environment and conditions of use.

- Stop the humidification operation before changing the smart head. Failure to do so could damage the product.
- Use a towel or cloth to wipe away any collected water when changing the head.

Type of smart head	Upward-facing	Angled	Bidirectional
Use to...	Spray mist upwards. Humidifies the area above the product.	Spray mist diagonally. Humidifies the area in front of and below the product.	Spray mist in two directions. Humidifies a large area.

For more information about how to attach the smart heads, see “6. Attach a smart head” on page 9.

For more information about how to remove the smart head, see “1. Remove the smart head” on page 15.

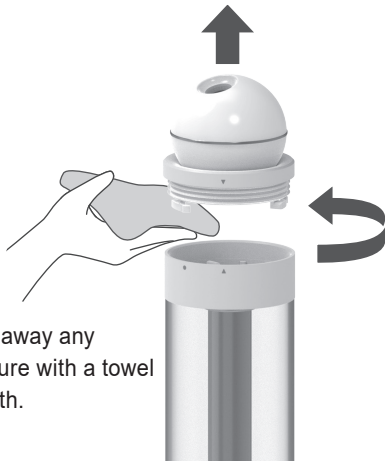
Beauty mode



- **Add water before attaching the beauty attachment as water can not be added after it is attached.** See “Adding water to the smart bar” on page 15.
- When carrying the beauty attachment, exercise care not to drop it.
- To add water while using the product in beauty mode, remove the beauty attachment, attach the smart bar to the main unit, and only add water to the water inlet on the smart bar. If you add water directly to the main unit, the photocatalyst will not be able to purify the water.

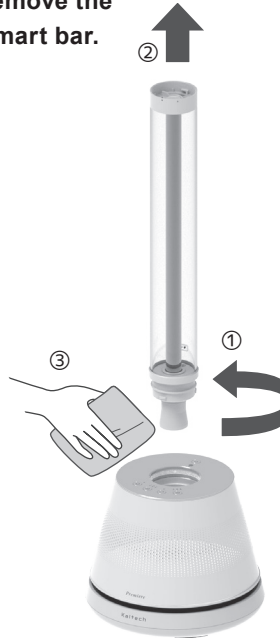
1. Remove the smart head.

Water may collect inside the smart head. Have a towel or cloth handy. See “1. Remove the smart head” on page 15.

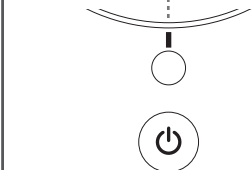
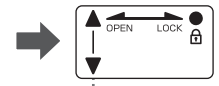


Wipe away any moisture with a towel or cloth.

2. Remove the smart bar.



① Rotate the bar until the ▼ mark aligns with the | mark on the operating panel.



② Lift up the smart bar.

③ Wipe away any moisture with a towel or cloth. Discard the water inside the smart bar and store in a stable location.

3. Place the product in a firm, level location, for example on a table.



Do not use in the following locations:

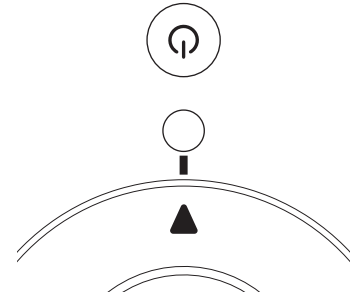
- Within reach of a small child
- In an unstable location
- Where the product would be positioned higher than your face



4. Attach the beauty attachment.



Align the ▲ mark on the beauty attachment with the | mark on the operating panel and insert the attachment into the main unit.



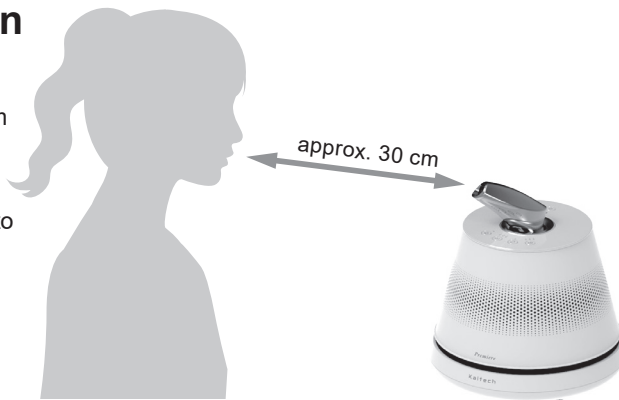
5. Verify that the product is turned on and press the humidification button.

- The product will operate in beauty mode, spraying mist for approx. 3 minutes. To spray mist again, press the humidification button.
- In beauty mode, the product is preconfigured to operate with the optimal mist volume and time settings. Therefore, you cannot change the mist volume or use intermittent operation or the off-timer. Pressing buttons other than the humidification button will have no effect on the product's operation.



When applying mist to your skin

- Position the main unit's beauty attachment so that it is approx. 30 cm from your face or décolletage (the area from the base of the neck to the breasts).
- The area around the attachment as well as your clothing, the table, and other nearby objects may become wet due to moisture from the mist. If this concerns you, protect your clothing and the table with towels so they do not get wet.
- Position the main unit so that the mist is not affected by airflow from an air conditioner or other appliance.



After using beauty mode (3 min.)

- The fan will run for approx. 30 sec. to expel any mist from inside the main unit. Do not expose your face to this airflow or replace the beauty attachment with the smart bar while the fan is operating.



If you encounter any skin problems while using beauty mode, halt use and consult your physician.



Extended use of beauty mode may cause the surface of the beauty attachment to become hot. This does not indicate any problem with the product's operation.

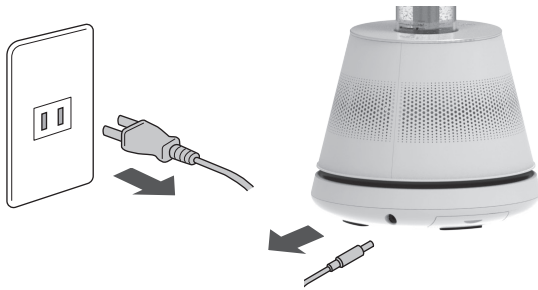
Cleaning the product

Normal cleaning (recommended once a week)

Perform a normal cleaning about once a week.

Wipe the product and surrounding area with a dry cloth or towel while performing the cleaning process to keep them from getting wet. Clean the product in a dry, moisture-free area so that it does not get wet.

- 1. Unplug the power cord from the power outlet and disconnect the power cord from the main unit.**

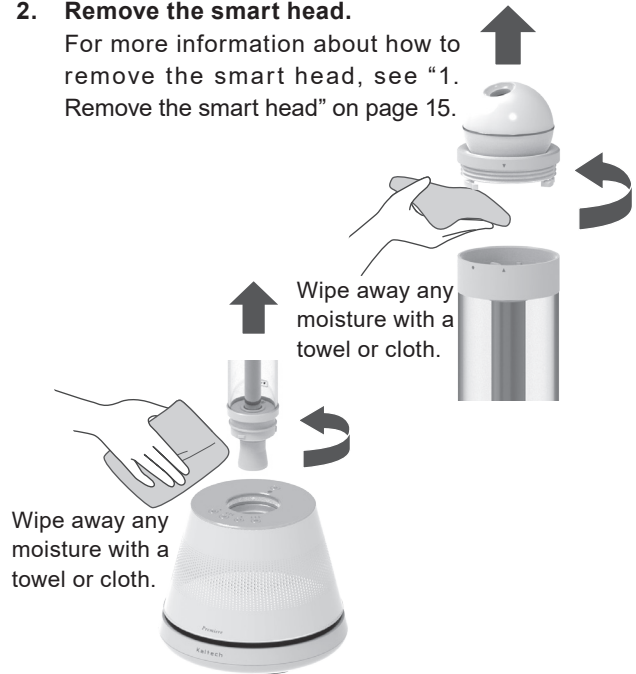


- 3. Remove the smart bar and drain any water that's collected inside the smart bar via the water inlet.**

For more information about how to remove the smart bar, see "2. Remove the smart bar" on page 17.

- 2. Remove the smart head.**

For more information about how to remove the smart head, see "1. Remove the smart head" on page 15.



4. Remove the premium touch cover.

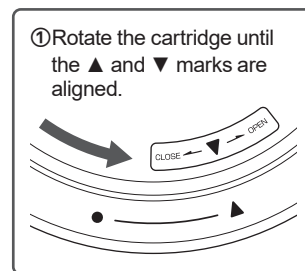


5. Remove the operating panel.



6. Remove the dedicated cartridge.

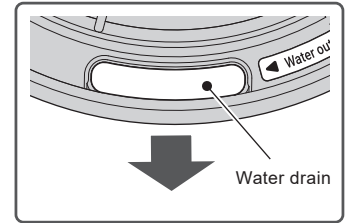
! Reattach the dedicated cartridge to the main unit as soon as you are finished cleaning it as leaving the cartridge uninstalled for an extended period of time will cause it to dry out.



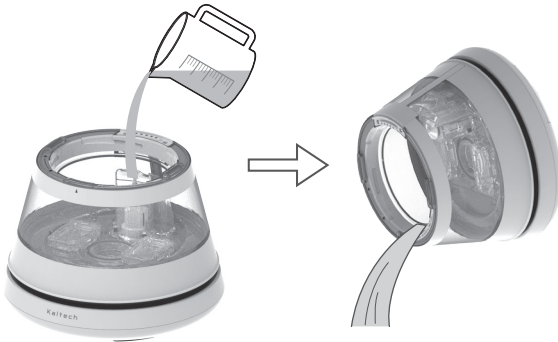
2 Lift up.

7. Drain any water from the main unit's water drain.

! Be sure to drain water from the drain. Draining water from any other part of the product can damage it.



8. If any debris remain, add water to rinse the main unit and then drain the water from the drain.



Make sure to keep water out of the air outlet, which could be damaged if any water gets inside.

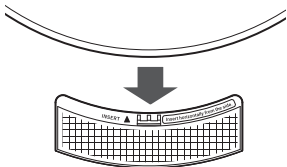


9. Remove the pre-filter and wipe away any dirt on it with a standard sponge or soft cloth.

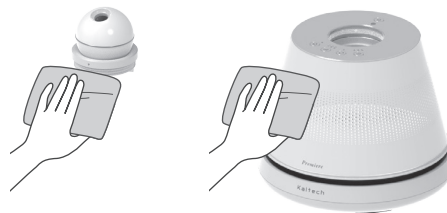
Note: Avoid applying excessive pressure to the surface of the pre-filter.



Pull the pre-filter out from the side of the main unit while keeping it level.



10. Reassemble the product.



Once you are finished cleaning, wipe away any remaining moisture and stains from the product with a towel or cloth. When you are finished wiping, reassemble the product. For more information about reassembly, see “Assembling the main unit” on page 7.

Replacing the dedicated cartridge

(Rough guide: If the product has been used 5 hours per day, replace the cartridge after approx. 4 months.
Note: Varies with frequency of use and water quality in the area where the product is being used.)

The dedicated cartridge is a consumable part (sold separately). The operation indicator lamp and smart bar will indicate when it is time to replace it. To purchase a new dedicated cartridge, please contact your local distributor.
<https://kaltech-global.com>

If you notice any unusual odor from the mist before the white blinking light for replacing the dedicated cartridge, please replace the cartridge and use softened water thereafter, especially since the cartridge is likely to be worn out due to high hardness. If you fail to replace the cartridge soon enough, the product may fail to function effectively.

Note: Follow the disposal guidelines in your community when disposing of used cartridges. If the disposal guidelines are unclear, dispose of the cartridges as noncombustible waste.

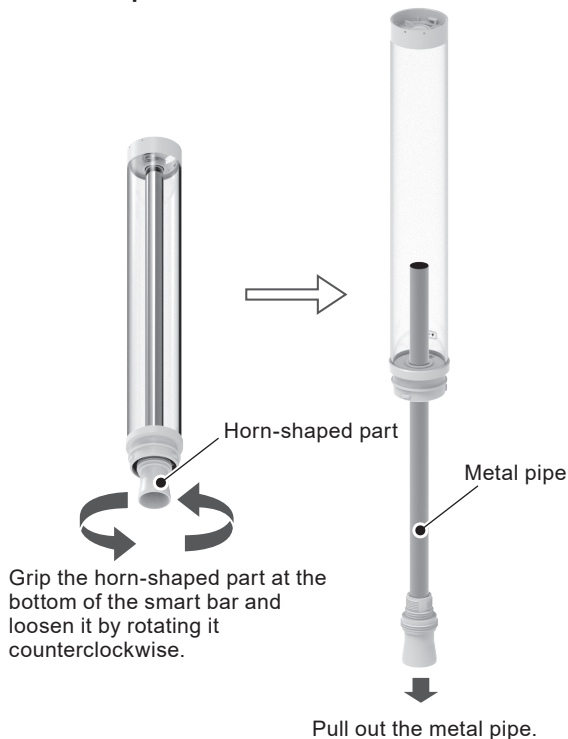
Press and hold the humidification button to reset the cartridge replacement warning. See “Indicator lamps” on page 14.

Changing the water (Rough guide: When the product has not been turned on for at least 1 day)

There's no need to change the water while the power is on since the photocatalyst function purifies it. If the product has not been turned on for at least 1 day, the water in the main unit will need to be changed.

If you're concerned about dirt in the smart bar

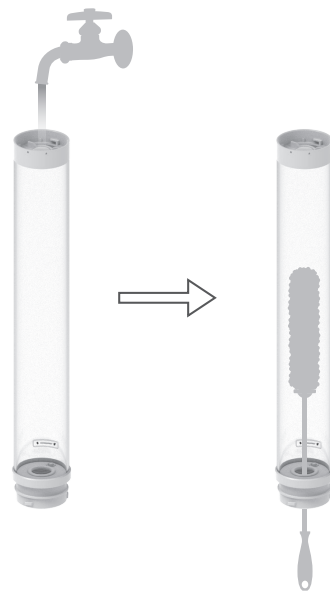
1. Take apart the smart bar.



2. Wash the smart bar with water.



If there is an excessive amount of contamination inside the smart bar, clean it with a soft brush or sponge. Using a stiff brush or scrubbing brush could leave scratches on the inside of the bar.*

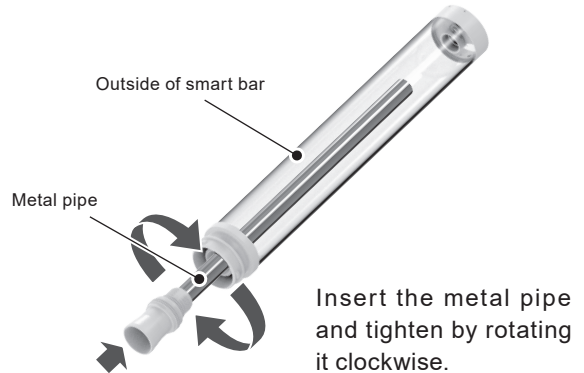


**If the smart bar is excessively dirty, clean it with a soft cloth and neutral detergent diluted to 1% concentration with water. Never wipe the bar with a chemical product that contains paint thinner, benzene, alcohol, or any other solvent. Doing so may cause tiny cracks to form or turn the bar white.*

3. Once you are finished cleaning the smart bar, wipe away any remaining moisture and stain with a towel or cloth.



4. Reattach the metal pipe.



If not using the product for an extended period of time


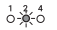
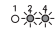


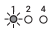
If the product will not be turned on for approx. 10 days, or otherwise will remain unused for an extended period of time, or not used for more than half a day due to power outage, cleaning the main unit and smart bar will be necessary. Wipe the product and surrounding area with a dry cloth or towel while performing the cleaning process to keep them from getting wet. Clean the product in a dry, moisture-free area so that it does not get wet. After cleaning the product, allow it to dry thoroughly and then store it.

Dedicated cartridge

If the product will not be used for an extended period of time, discard the used dedicated cartridge. Cartridges cannot be reused as they cannot be stored for long periods of time.

Note: Follow the disposal guidelines in your community when disposing of used cartridges. If the disposal guidelines are unclear, dispose of the cartridges as noncombustible waste.

Error

Error	Error indications				Beeping sound	Solution
	Operation indicator lamp	Smart bar lamp	Off timer lamp	Photocatalyst LED		
The product has fallen over.	On (red)	Flashing slowly (red)	 Flashing	Off	Yes	Place the product in a stable, level location and cycle the power. See "Positioning the product" on page 10. See "Using the product" on page 11.
An error or malfunction occurred during operation.	On (red)	Flashing slowly (red)	Flashing  Flashing  Flashing  Flashing 	Off	Yes	Cycle the power. See "Using the product" on page 11. Contact your local distributor with a description of the problem.
The water level in the main unit is too high.	On (red)	Flashing slowly (red)	 Flashing	Off	Yes	Reduce the amount of water in the main unit. See "7. Drain any water from the main unit's water drain." on page 22 Cycle the power. See "Using the product" on page 11.
The operating panel is improperly installed.	—	—	—	2 flashes then off	Yes	Attach the operating panel properly. See "Assembling the main unit" on page 7. Cycle the power. See "Using the product" on page 11.

Contact your distributor with a description of the problem.

Safety functions

Stop if overturned	Operation will stop if the product tilts too far, overturns, or is subject to vibration.
Auto power off function	After 10 days without operating the product after turning on, it will be automatically turned off. After 5 days without supplying water from the indication for "Out of water" (Operation lamp flashes orange), product will be automatically turned off.
Error detection	Operation will stop if an error is detected, such as a fan or sensor malfunction in the main unit, and the operation indicator lamp and smart bar lamp will indicate the error.
Operating panel detection	Operation will stop if the operating panel is removed during the humidification operation, and the error will be indicated by the photocatalyst LED and a beeping sound.

Troubleshooting

Problem	Things to check
The product will not turn on.	<ul style="list-style-type: none">● Is the power cord plugged into a power outlet? ⇒ Verify the following connections:<ul style="list-style-type: none">· Power cord plug and power outlet· Dedicated AC adapter and dedicated power cord· Dedicated AC adapter jack and main unit● Did you turn on the product? ⇒ If the product is not turned on, press the power button.
Power turns off automatically	<ul style="list-style-type: none">● Has it been more than 10 days since the last operation?● Has it been more than 5 days without supplying water after running out of water? ⇒ Clean the product and then turn the power on again.
Humidification doesn't start, even when you press the humidification button.	<ul style="list-style-type: none">● Was there only a little bit of water in the smart bar when you started humidification? ⇒ Add water if there is not enough water in the smart bar.
No mist is generated even though you pressed the humidification button while there was water in the smart bar.	<ul style="list-style-type: none">● Is there enough water in the smart bar? ⇒ When being operated for the first time and after cleaning, the product may not operate if there is only a little bit of water in the smart bar. Add a sufficient amount of water.● Is the product in the standby state? (Is the operation indicator lamp flashing blue?) ⇒ Wait for the water to be ready.

Problem	Things to check
The operation indicator lamp is flashing orange.	<ul style="list-style-type: none"> ● Is there water in the smart bar? ⇒ Add water to the smart bar.
The operation indicator lamp has turned red.	<ul style="list-style-type: none"> ● Has the main unit been placed in a stable, level location? ⇒ Place the product in a stable, level location and cycle its power.
The operation indicator lamp is flashing white.	<ul style="list-style-type: none"> ● Has the dedicated cartridge been used for an extended period of time? ⇒ Replace the dedicated cartridge.
The product is beeping.	<ul style="list-style-type: none"> ● Has the operating panel been firmly attached to the main unit? ⇒ Remove the operating panel and reattach it. ⇒ See “Error indications” on page 26.
The product is giving off a concerning odor.	<ul style="list-style-type: none"> ● Has water been left in the smart bar for an extended period of time? ● Is the main unit, smart bar, or pre-filter dirty? ⇒ See “Cleaning the product” on page 20. ● Has the dedicated cartridge been used for an extended period of time? ⇒ See “Replacing the dedicated cartridge” on page 23.
The sound of trickling water can be heard.	<ul style="list-style-type: none"> ⇒ This is the sound of water being sprayed as mist.

IMPORTANT SAFETY INSTRUCTIONS

Please follow the user manual's instructions.

Before using this product, be sure to read this "Safety Precautions" section.

The following information is provided to ensure the correct and safe use of this product.

• Notation of these items



WARNING

Content that may cause fire, electric shock, or injury, resulting in death or serious injury.



CAUTION

Contents that may cause burns or other minor injuries, or damage to the product, fire, or electric shock.



Prohibited acts



Actions that must be taken.

When using electrical appliances, especially when children are present, basic safety precautions should always be followed, including the following:



WARNING

- To reduce the risk of burns, electrocution, fire, or injury to persons:
- An appliance should never be left unattended when plugged in.
- Use this appliance only for its intended use as described in this manual. Do not use attachments not recommended by the manufacturer.
- Never operate this appliance if it has a damaged cord or plug, if it is not working properly, or if it has been dropped, damaged, or dropped into water. Return the appliance to a service center for examination and repair.
- Keep the cord away from heated surfaces.
- Never block the air openings of the appliance or place it on a soft surface, such as a bed or couch, where the air openings may be blocked.
- Never use while sleeping.
- Never drop or insert any object into any opening or hose.
- Do not use outdoors or operate where aerosol (spray) products are being used or where oxygen is being administered.
- Unplug this appliance before filling. Fill with water only. Do not overfill.
- Do not use an extension
- Do not use additives.



- Do not damage the AC adapter or power cord, or use a damaged power cord. Do not modify the power cord, bend it with excessive force, pull on it, or twist it. Do not place the cord underneath or between heavy objects. Do not place the cord close to hot objects.
- Do not plug or unplug the AC adapter or power cord with wet hands.
- Do not connect the product to a power strip that is also powering other appliances or devices.
- Do not use the product unless the power cord is plugged securely into a power outlet.
- Do not disassemble, modify, or repair the main unit or its photocatalytic plate.
- Do not pour cigarette ash, drinking water, or other liquids into the intake or outlet.
Note: If any liquid or other substances gets into the main unit, turn off the product and contact the store where you bought the product.
- Do not stick your fingers or objects into the beauty attachment, smart bar, smart head, main unit, or fan inlet or outlet.
- Do not cover the main unit or any accessories with a cloth, vinyl tarpaulin, or other material that has been moistened with a solvent such as oil, alcohol, benzene, or paint thinner.
- Do not get any part of the product wet other than the water inlet. Do not wash the main unit with water.
- Do not pour liquid into the fan outlet.
- Do not add any liquid such as perfumes, aromatic oils, chemical substances, or detergents, to the smart bar or main unit.
- Do not place the product on top of another electric appliance.
- Do not use the product in a location where it could be reached by infants or pets.
- Do not subject the product to strong impacts or vibrations, such as by stepping on it or dropping it.
- Do not allow older individuals, children, people with physical disabilities, or people who have difficulty communicating to use the product alone without first receiving appropriate instruction or guidance from a parent or caregiver.
- Do not allow children to use the product as a toy.
- Do not allow children to play with the vinyl bags used as packaging or put them over their heads due to the risk of asphyxiation.
- Do not use the product outdoors.



- Close supervision is necessary when this appliance is used by, on, or near children or individuals with certain disabilities.
- Use facial steamer only on a level surface.
- This appliance is not intended for use by persons (including children) with reduced physical, sensory or mental capabilities, or lack of experience and knowledge, unless they have been given supervision or instruction concerning use of the appliance by a person responsible for their safety.
- Children should be supervised to ensure that they do not play with the appliance.
- If the SUPPLY CORD is damaged, it must be replaced by the manufacturer, its service agent or similarly qualified persons in order to avoid a hazard.
- Be sure to use the supplied AC adapter (KA65E-3601800P made in SHENZHENKEYU POWER SUPPLY TECHNOLOGY CO., LTD).



WARNING



- Plug this product into a commercial power outlet. North America 120V , Europe 220-240V
- Use only the dedicated AC adapter and dedicated power cord that ship with the product.
- Insert the power cord's plug all the way into the power outlet.
- Regularly remove dust and other debris from the power cord's plug and the jack used to connect it to the AC adapter.
- Unplug the appliance during filling and cleaning.
- If you hear thunder, turn off the product and unplug it from the power outlet.
- If you notice a burning smell or unusual sounds while using the product, turn it off and unplug it from the power outlet.
- Position the power cord so that people won't trip on it.
- Use neutral detergent when cleaning the product.



CAUTION



- Do not use the product in the following locations:
 - Locations where the outlet could be blocked by curtains, drying laundry, or other objects
 - Locations where the product could get wet or be exposed to high levels of humidity, for example in a bathroom
 - Locations where the product would be exposed to airborne oil droplets, for example cooking oil
 - Locations where there are strong vibrations
 - Locations where sprays or chemical substances are used
 - Locations where there are flammable, explosive, or corrosive gases
 - Locations where the product would be exposed to direct sunlight or extremely high temperatures
 - Unstable locations
 - Locations where the product would be exposed to airflow from an air conditioner, heater, or other appliance
 - Locations where there is a strong magnetic field, for example near an electromagnetic cooking range or speaker
 - Close to a television or radio
 - Locations where a defibrillator is being used nearby
- Keep credit cards, magnetic storage media, and similar materials away from the product as it uses magnets.
- Keep away from the product if you have a pacemaker.
- Do not place anything on top of the product. Do not place the product close to air-conditioning or heating equipment or open flames.
- If the product becomes hot during use, do not touch it.
- Do not climb or lean on the product.
- Do not tilt the product or turn it upside down.
- Do not shake the product.
- Do not drop the product.



- Do not drink the water in the smart bar or main unit.
- Do not use the product without the smart bar or a smart head.
- Do not use the product with the smart head's outlet(s) blocked.
- Do not apply excessive force when attaching or removing the smart head, smart bar, or dedicated cartridge.
- Do not overfill the smart bar with water.
- Be aware that high humidity levels may encourage the growth of biological organisms in the environment.
- Do not permit the area around the humidifier to become damp or wet. If dampness occurs, turn the output of the humidifier down. If the humidifier output volume cannot be turned down, use the humidifier intermittently. Do not allow absorbent materials, such as carpeting, curtains, drapes, or tablecloths, to become damp.
- This appliance can be used by children aged from 8 years and above and persons with reduced physical, sensory or mental capabilities or lack of experience and knowledge if they have been given supervision or instruction concerning use of the appliance in a safe way and understand the hazards involved.
- Children being supervised not to play with the appliance.
- Children shall not play with appliance.
- Cleaning and user maintenance shall not be made by children without supervision.



- Add water to the smart bar only. Never add water directly to the main unit.
- Grip the power cord's plug when unplugging it. Be sure to turn off the product before unplugging it.
- Empty and clean the humidifier before storage. Clean the humidifier before next use.
- When using a chemical disinfectant indoors, for example an insecticide fog, turn off the product and cover it with a sheet or other material to ensure the chemical doesn't get onto the product. Be sure to thoroughly ventilate the interior space before resuming use of the product.
- Follow all local rules and directions when disposing of the product.
- Place the product in a sturdy, level, and stable location.
- Stop the dehumidification operation before adding water.
- Turn the product off and unplug it before draining it.
- Keep the product away from walls and other surfaces that could be damaged by moisture during use.
- If water leaks from the product, immediately unplug it and drain the water from the smart bar and main unit.
- Drain the water from the product if there is a possibility that it might freeze.
- Be sure to replace the dedicated cartridge when the cartridge replacement notice (operation lamp flashing white) is displayed. Do not use the machine for a long period of time without replacing the dedicated cartridge.
- Before moving the product, be sure to stop operation and unplug it. Drain any water from the smart bar and main unit.
- Kaltech is not liable for any accident or damage caused by improper installation or handling of the product.
- Never leave water in the reservoir when the appliance is not in use.
- Micro-organisms that may be present in the water or in the environment where the appliance is used or stored, can grow in the water reservoir and be blown in the air causing very serious health risks when the water is not renewed and the tank is not cleaned properly every 3 days.



WARNING (beauty mode)

- when the appliance is used in a bathroom, unplug it after use since the proximity of water presents a hazard even when the appliance is switched off; for additional protection, the installation of a residual current device (RCD) having a rated residual operating current not exceeding 30 mA is advisable in the electrical circuit supplying the bathroom. Ask your installer for advice



CAUTION (beauty mode)



- after use the appliance should be cleaned to avoid the accumulation of grease and other residues.
- The following people should not use the product as doing so could result in an accident or other problems:
This may cause an accident or other problem.
 - People who have or might have heart disease or injury
 - Infants and others who cannot communicate themselves
 - People who cannot perceive temperature or stimulation
 - People with an autoimmune disease
- The following people should consult a physician before using the product:
 - People with an acute medical condition
 - People with an infectious disease
 - People with a malignant tumor
 - People with a febrile illness
 - People with high blood pressure or a blood disease
 - People with a fever
 - People with a perceptual disorder caused by advanced peripheral circulation insufficiency, for example diabetes
 - People with nerve damage
 - People with dermatosis or atopic dermatitis
 - People who are taking medication as part of ongoing medical treatment
 - People with a preexisting disease, such as a predisposition to allergic reactions or contact dermatitis, or people who have concerns about their skin during use
- Do not use the product in the following circumstances or on the following parts of the body as doing so could result in an accident or other problem:
 - If your skin has a condition such as an injury, rash, inflammation, or itchiness
 - If you're intoxicated
 - Inside your mouth, around your groin, on any mucus membrane, etc.
 - In your eyes



If you are unable to determine yourself that you can use the product safely, consult a physician before use.

- Do not allow people who cannot communicate to use the product.
 - Avoid use of the product by unsupervised children or people with a physical disability.
 - Children should only use the product with the consent of a parent or guardian and while under the supervision of a parent, guardian, qualified specialist, or other suitable adult.
-

**READ ALL INSTRUCTIONS BEFORE USING
SAVE THESE INSTRUCTIONS**

Specifications

Product Name	Yuragi Junsui Premiere Beauty humidifier				
Model Number	KL-H01 (global model)				
Effective Range *1 (High mode)	Approx. wooden 86.1ft ² / 8m ² , prefabricated house 150.7ft ² / 14m ²				
AC adaptor	Input : North America 120V 60Hz , Europe 220-240V 50-60Hz Output : DC36V				
Rated voltage	DC 36V				
Operation mode	Standby *2	Low	Medium	High	Beauty *3
Power Consumption	7W	20W	28W	40W	39W
Humidification volume *4	—	100ml/h	200ml/h	300ml/h	15ml/h *5
Maximum continuous humidification time *6	—	12 hours	6 hours	4 hours	—
Operating temperature range	41 °F to below 104°F / 5°C to below 40°C				
Off-timer settable time (h)	1 hour / 2 hours / 4 hours				
External Dimensions	Diameter : 10in / 245mm Hight : 25.7in / 653mm (Hight of main unit excluding smart bar 7.96in / 202mm)				
Weight	Approx. 6.4lb / 2.9kg				
Water Tank Capacity	Approx. 1,200ml				
Power cord length	Total : Approx. 118.2 in /3.0m (DC cord of AC adaptor : Approx. 59.1 in /1.5m, Power cord : Approx. 59.1 in /1.5m)				
Accessory	Main Unit x 1 (Smart bar x 1, Smart head x 1, Premium touch cover x 1, Operation panel x 1 : These are already attached to the main unit.) / additional smart head x 2 (In a special pouch) / Beauty attachment x 1 (in a dedicated pouch) / Dedicated cartridge x 1 / Dedicated ac adaptor x 1 / Dedicated power cord x 1 / Oner's manual x 1 (this publication)				

*1 : Applicable area based on the JEM 1426 standard from The Japan Electrical Manufacturers' Association.

Figures should be treated as rough estimates as the product' s humidification capacity varies with the operating environment.

*2 : Please leave the product turned on, even when not in use, to keep the photocatalyst running and prevent growth of bacteria.

*3 : This mode is only for when a beauty attachment is installed.

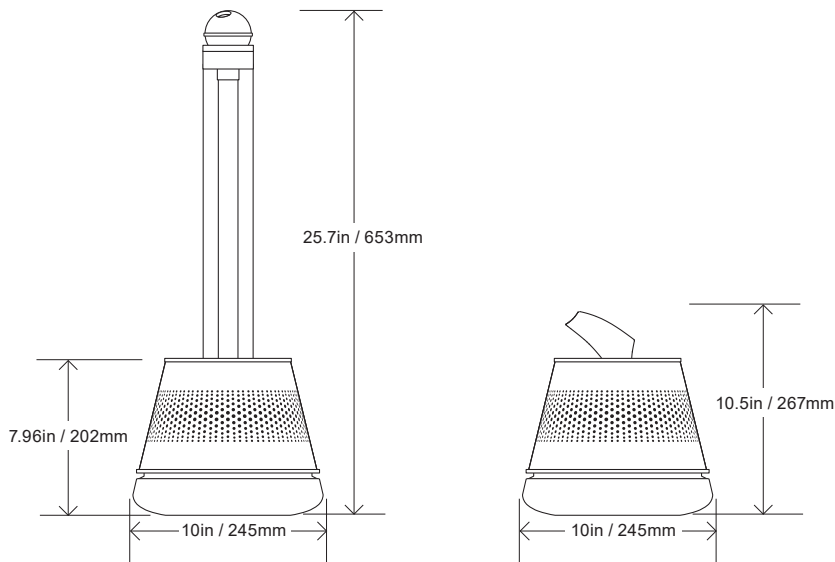
*4 : Amount of humidification at 20°C/30% humidity.

*5 : Total amount of humidification for 3 minutes in beauty mode operation.

*6 : When filled with 1,200 mL (950 mL for the smart bar and 250 mL for the photocatalytic tray' s usable volume).

· Specifications and appearance are subject to change without notice.

● Dimensions



Memo

Kaltech

KALTECH CORPORATION

3-3-7 Bakuromachi, Chuo-ku, Osaka 541-0059, Japan

H01-tr ver.1.2.e